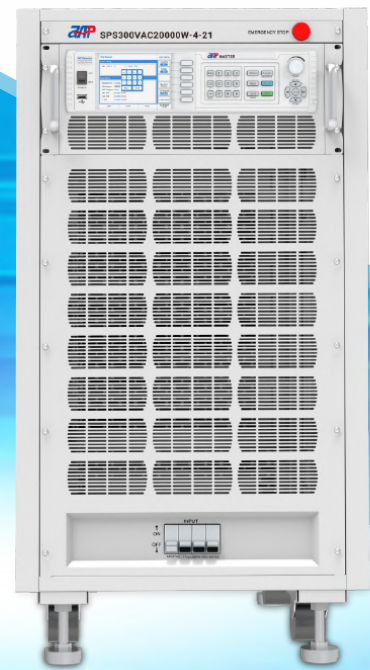
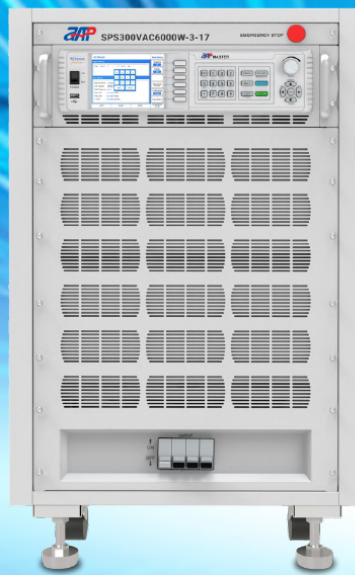


# SPS-300 Series AC Power Supply System



■ High Efficiency

■ High Precision

■ High Stability

# SPS-300 Series AC Power Supply System



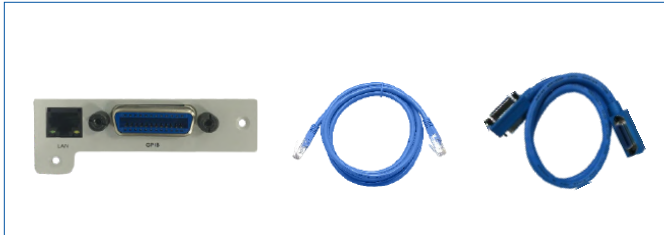
Output			Connection Type	Model	Size	Standard Interface	Optional Information	Certificates					
Rated Voltage	Rated Power	Rated Current							Output Model				
150V/300V	1200W	10.08A/5.04A	1-Phase	2 Parallel	9U <sup>4</sup>	RS232/RS485/USB	(1)	CE					
150V/300V	2000W	15.56A/8.28A				SPS300VAC2000W-2-9			RS232/RS485/USB				
150V/300V	3000W	24.84A/12.42A				SPS300VAC3000W-2-9			RS232/RS485/USB				
150V/300V	4000W	28.8A/14.4A			17U <sup>5</sup>	SPS300VAC4000W-3-17			RS232/RS485/USB				
150V/300V	6000W	49.68A/24.84A				SPS300VAC6000W-4-17			RS232/RS485/USB				
150V/300V	8000W	57.6A/28.8A				SPS300VAC8000W-4-17			RS232/RS485/USB				
150V/300V	10000W	82.8A/41.4A				SPS300VAC10000W-4-17			RS232/RS485/USB				
150V/300V	1800W	15.12A/7.56A				SPS300VAC1800W-2-9			RS232/RS485/USB				
150V/300V	3000W	24.84A/12.42A	1-Phase	3 Parallel	9U <sup>4</sup>	RS232/RS485/USB	(1)	CE					
150V/300V	4500W	37.26A/18.63A				SPS300VAC4500W-2-9			RS232/RS485/USB				
150V/300V	6000W	43.2A/21.6A				SPS300VAC6000W-3-17			RS232/RS485/USB				
150V/300V	9000W	74.52A/37.26A			17U <sup>5</sup>	SPS300VAC9000W-4-17			RS232/RS485/USB				
150V/300V	12000W	86.4A/43.2A				SPS300VAC12000W-4-17			RS232/RS485/USB				
150V/300V	15000W	124.2A/62.1A				SPS300VAC15000W-4-17			RS232/RS485/USB				
150V/300V	2400W	20.16A/10.08A				1-Phase			4 Parallel	17U <sup>5</sup>	RS232/RS485/USB	(1)	CE
150V/300V	4000W	33.12A/15.56A									SPS300VAC4000W-2-17		
150V/300V	6000W	49.68A/24.84A	SPS300VAC6000W-2-17	RS232/RS485/USB									
150V/300V	8000W	57.6A/28.8A	SPS300VAC8000W-3-17	RS232/RS485/USB									
150V/300V	12000W	99.36A/49.68A	21U <sup>6</sup>	SPS300VAC12000W-4-21	RS232/RS485/USB								
150V/300V	16000W	115.2A/57.6A		SPS300VAC16000W-4-21	RS232/RS485/USB								
150V/300V	20000W	165.6A/82.8A		SPS300VAC20000W-4-21	RS232/RS485/USB								
300V/600V	1200W	5.04A/2.52A		1-Phase	2 Series		9U <sup>4</sup>	RS232/RS485/USB		(1)	CE		
300V/600V	2000W	8.28A/4.14A	SPS600VAC2000W-2-9			RS232/RS485/USB							
300V/600V	3000W	12.42A/6.21A	SPS600VAC3000W-2-9			RS232/RS485/USB							
300V/600V	4000W	14.4A/7.2A	17U <sup>5</sup>			SPS600VAC4000W-3-17	RS232/RS485/USB						
300V/600V	6000W	24.84A/12.42A				SPS600VAC6000W-4-17	RS232/RS485/USB						
300V/600V	8000W	28.8A/14.4A				SPS600VAC8000W-4-17	RS232/RS485/USB						
300V/600V	10000W	41.4A/20.7A				SPS600VAC10000W-4-17	RS232/RS485/USB						

## Dimensions & Weight



## Optional Information

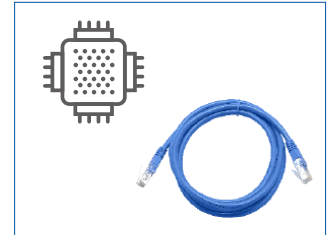
(1) LAN & GPIB interface card & cables



(2) GPIB interface card & cable



(3) LAN interface card & cable



## Features

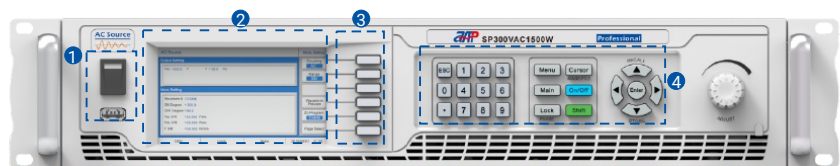
- Large touch color screen, possess complete functions and easy to operate.
- AC+DC mixed or independent output mode for voltage DC offset simulation.
- Capable of setting output slope/phase angle, 0~359.9°.
- Output frequency 15~1000Hz, capable of setting output slope of voltage and frequency.
- High output crest factor could satisfy surge tests requirements.
- Multiple current measuring level selection. Increase measurement accuracy.
- Standard USB data interface, support CSV file waveform import.
- OCP/OVP/OPP/OTP/ Short circuit protection.
- Built-in power meter, which is capable of measuring 15 electrical parameters per phase, including voltage, current, power, etc.
- With reverse current protection to avoid current flowing backward.
- Capable of setting voltage and current output restriction, support for constant current output mode.

## Panel Introduction

### 0.6 - 1.5kVA

- 1 Power Switch (Up), USB Interface (Down)
- 2 Color Touch Screen
- 3 Multifunctional Keys
- 4 Numeric and Functional Keys

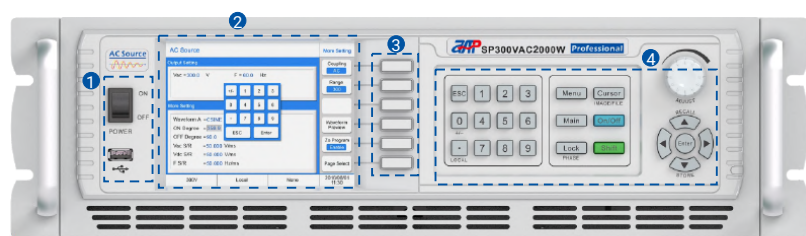
#### Front Panel Introduction



### 2 - 5kVA

- 1 Power Switch (Up), USB Interface (Down)
- 2 Color Touch Screen
- 3 Multifunctional Keys
- 4 Numeric and Functional Keys

#### Front Panel Introduction

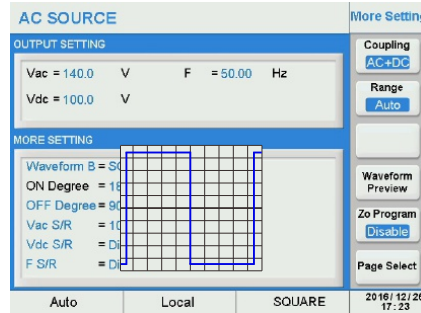
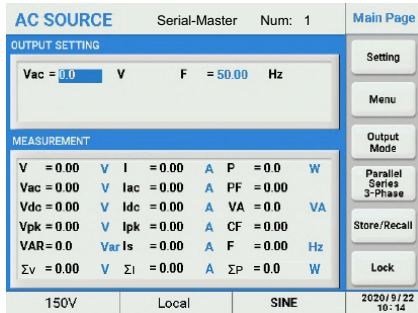


# SPS-300 Series AC Power Supply System

## Function Introduction

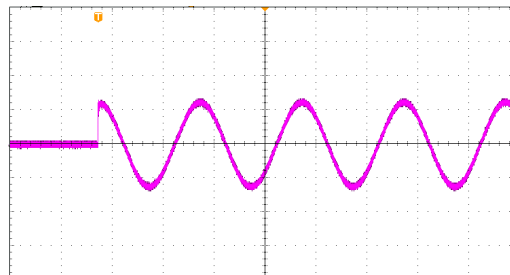
### Graphical User Interface

The large color touch screen provides simple and fast operation for customers, real-time update of display output data and power status, and graphical display makes it more intuitive.



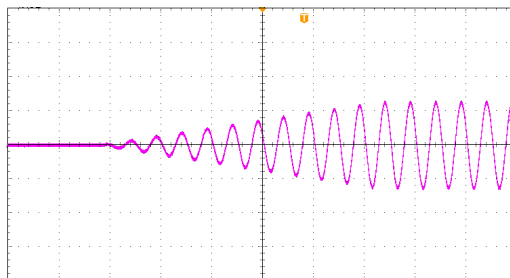
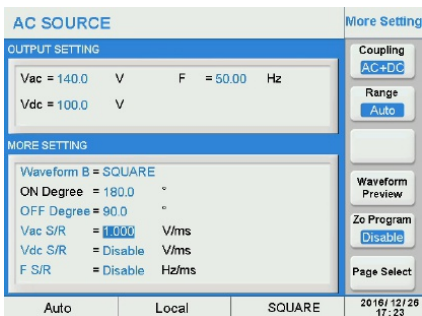
### Settable ON/OFF Phase Angle of Output Waveform

This series of AC power supply can set the ON phase and OFF phase of sinusoidal output waveform, suitable for the output test of switching power supply. Set the ON angle to 90 degrees for surge current testing, the power supply will show the measured value of surge current. Users can set when start to measure the surge current and the duration of the measurement.



### Slew Rate Setting For Voltage and Frequency

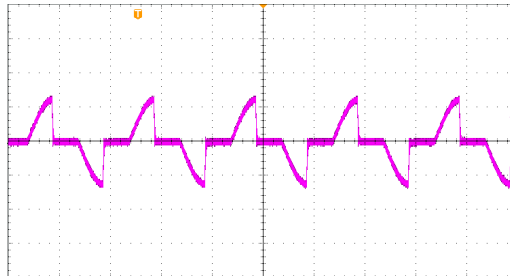
This series AC power supply let users set the slew rate of voltage and frequency, in such application in order to reduce the inrush current during motor or compressor startup.





## Triac Dimmer Function

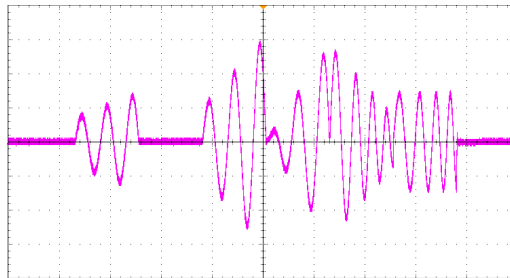
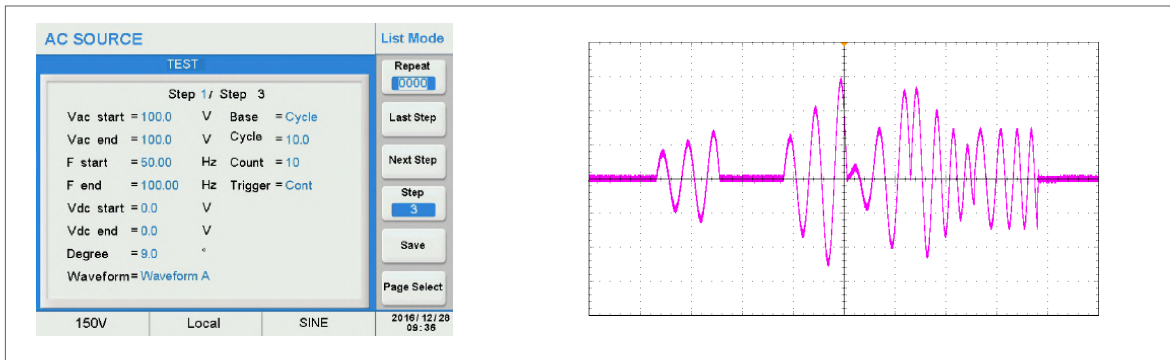
This series AC power supply built-in triac dimmer function, which is used to do dimming and speed regulating test for lamp or electric motor to ensure the products work well both in R&D and production testing.



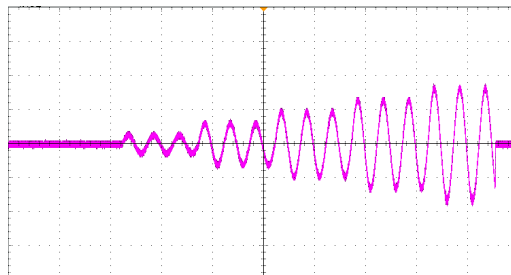
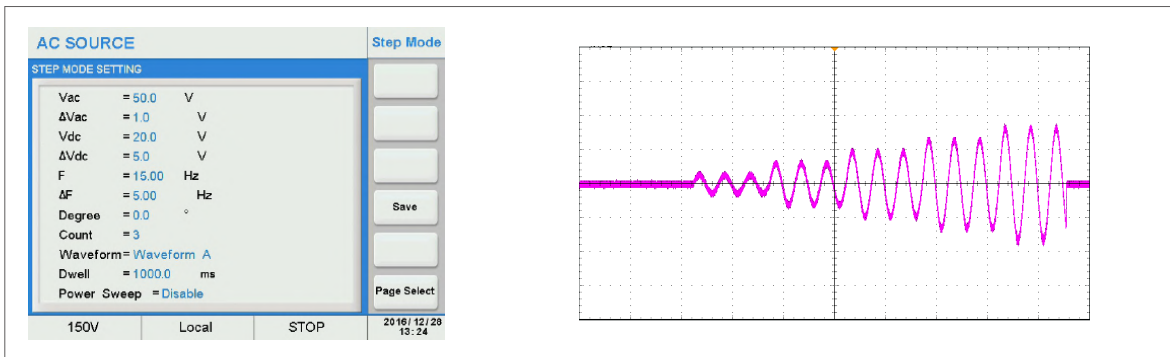
## Power Line Disturbance Simulation

This series AC power supply provides powerful function to simulate all kinds of power line disturbance conditions such as cycle dropout, transient spike, brown out and etc. This feature make this series AC power supply ideal for R&D labs, universities and certification labs.

### LIST Mode



### STEP Mode



# SPS-300 Series AC Power Supply System

## PULSE Mode

**AC SOURCE** Pulse Mode

PULSE MODE SETTING

Vac = 50.0 V

Vdc = 30.0 V

F = 15.00 Hz

Duty Cycle = 50.0 %

Degree = 0.0 °

Waveform = Waveform A

Period = 100.0 ms

Count = 3

Start = 0.0 ms

Save

Page Select

150V    Local    STOP    2016/12/23 13:08

## Voltage Sags/Voltage Spikes

**AC SOURCE** Transient

TRANSIENT SETTING

Trans-Start = 18.0 ms

Trans-Volt = 424.2 V

Trans-Time = 2.0 ms

Trans-Count = 9999

Save

Page Select

2016/12/23 11:43

**Voltage Sags**

**Voltage Spikes**

## File Save and Recall Via The USB Interface

The user can save the screenshot via the USB interface in the front panel. The user can import a CSV file via the USB interface to generate waveform output.

**AC SOURCE** Main Page

OUTPUT SETTING

Vac = 0.0 V    F = 0.00 Hz

USB

MEASUREMENT    Flash Disk is Ready!  
Press ENTER Button To Save!  
Press 2 Button To Read License!  
Press 3 Button To Write PLUSE File!  
Press 4 Button To Read PLUSE File!  
Press 5 Button To Write STEP File!  
Press 6 Button To Read STEP File!  
Press 7 Button To Write List File!  
Press 8 Button To Read List File!

Setting

Menu

Output Mode

Phase

Store/Recall

Lock

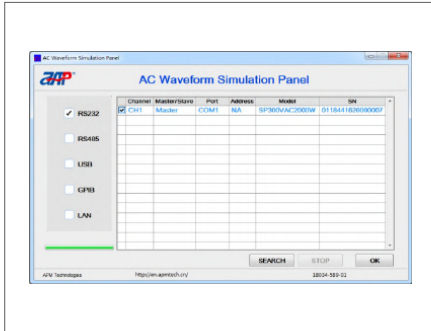
150V    Local    SINE    2060/07/10 04:07

A	B	C	D	E	F	G	H	I	J	K	L	M	N	O	P	Q	R	S				
1	List	Last	Pages	Total	Step	Step	Mode	Step	Repeat	degrees	Waveform	Vac(V)	Vdc(V)	Vpk(V)	Freq(Hz)	Trans-Start	Trans-Time	Trans-Count	Vdc(V)	Vpk(V)	Base	CycleTime(ms)
2	28	23	9	1	Count	30	S/A	100	100	50	100	0	0	0	0	0	0	0	0	0	0	10
3	28	23	9	2	Count	30	S/A	100	100	50	100	0	0	0	0	0	0	0	0	0	0	10
4	28	23	9	3	Count	30	S/A	100	100	50	100	0	0	0	0	0	0	0	0	0	0	10
5	28	23	9	4	Count	30	S/A	100	100	50	100	0	0	0	0	0	0	0	0	0	0	10
6	28	23	9	5	Count	30	S/A	100	100	50	100	0	0	0	0	0	0	0	0	0	0	10
7	28	23	9	6	Count	30	S/A	100	100	50	100	0	0	0	0	0	0	0	0	0	0	10
8	28	23	9	7	Count	30	S/A	100	100	50	100	0	0	0	0	0	0	0	0	0	0	10
9	28	23	9	8	Count	30	S/A	100	100	50	100	0	0	0	0	0	0	0	0	0	0	10
10	28	23	9	9	Count	30	S/A	100	100	50	100	0	0	0	0	0	0	0	0	0	0	10
11																						
12																						

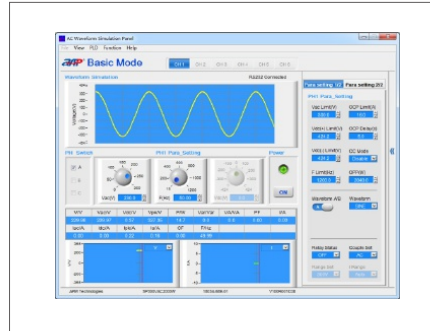
## Monitoring Software

AC Waveform Simulation Panel is a graphical user interface that provides extraordinary capabilities and convenience by delivering control of the unit remotely, which covers all functions of panel operation.

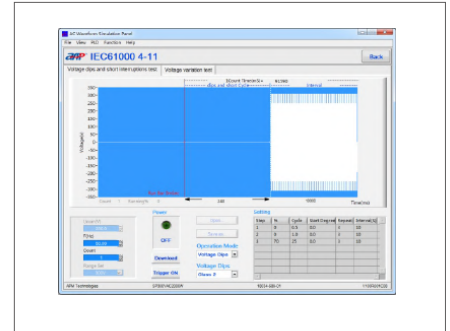
Login Interface



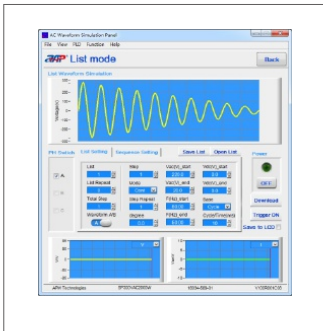
Basic mode(Main interface)



IEC61000 4-11 interface



List mode interface



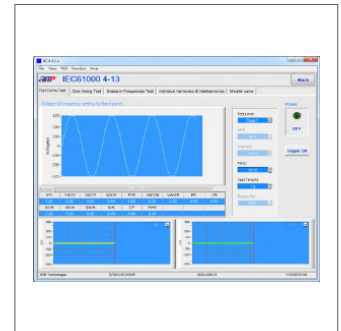
Pulse mode interface



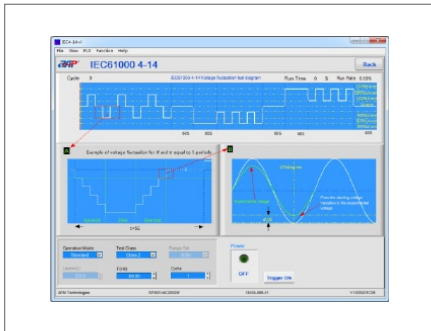
Step mode interface



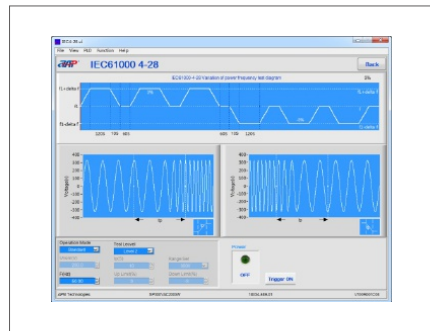
IEC61000 4-13 interface



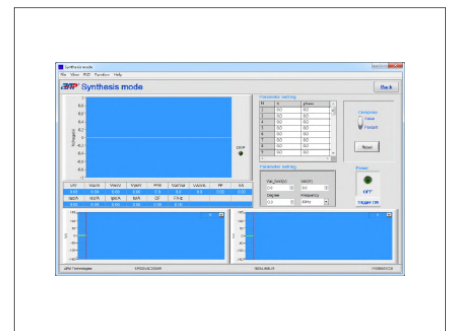
IEC61000 4-14 interface



IEC61000 4-28 interface



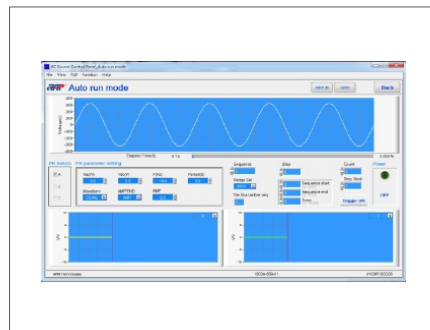
Synthesis mode interface



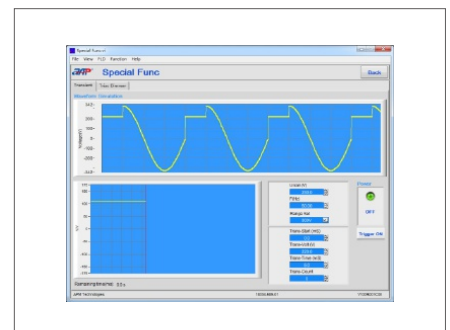
Harmonics Measure mode interface



Auto run mode interface



Special Func interface



# SPS-300 Series AC Power Supply System

MODEL	SPS300VAC1200W-2-9		SPS300VAC1800W-2-9		SPS300VAC2400W-2-17	
<b>Input</b>						
Voltage	90~265VAC					
Frequency	47~63Hz					
Phase	3 Phase, 4Wire+Groud/Y Connect					
Max.Current	20A		30A		40A	
Power Factor at 220VAC Input, Full	≥0.91, Active PFC					
Efficiency	>82% (Peak) >80% at 220VAC, 50Hz input/230VAC, 50Hz output)					
<b>Output</b>						
AC Power(Total) <sup>(1)</sup>	1080VA		1620VA		2160VA	
Max.Current (r.m.s) <sup>(1)</sup>	0~150V(L)	10.08A		15.12A		20.16A
	0~300V(H)	5.04A		7.56A		10.08A
Max.Current (Peak) <sup>(1)</sup>	0~150V(L)	58.32A		87.48A		116.64A
	0~300V(H)	29.16A		43.74A		58.32A
Voltage(AC)	Range	0~300VAC, 150V/300V/Auto				
	Resolution	0.1V				
	Accuracy	0.2% of setting + 0.8%F.S, at Voltage >3V				
Phase Angle (Starting /Ending)	Range	0~359.9°				
	Resolution	0.1°				
	Accuracy	±1° @45~65HZ				
Current OC Fold Mode	Range	0.1A				
	Resolution	2.0% of setting + 2.0%F.S.				
	Response Time	<1400ms				
Frequency	Range	15~1000HZ Full Range Adjust				
	Resolution	0.1Hz at 15.0~99.9Hz, 1Hz at 100~1000Hz				
	Accuracy	0.03% of setting				
Voltage(DC)	Range	0~424Vdc, 212V/424V/Auto				
	Resolution	0.1V				
	Accuracy	0.3% of setting + 0.8%F.S, at Voltage >3V				
Max.Current(L/H Range)(Total)	0~150V(L)	L 7.128A	L 10.692A	L 14.256A		
	0~300V(H)	H 3.402A	H 5.103A	H 6.804A		
Ripple & Noise(r.m.s)	L <1000mVrms @ Bandwidth 20HZ to 1MHZ					
	H <1500mVrms @ Bandwidth 20HZ to 1MHZ					
Ripple & Noise(Peak)	<4000mVp-p @ Bandwidth 20HZ to 1MHZ					
<b>Other Parameters</b>						
Total Harmonic Distortion(THD)	<0.5% (Resistive Load) at 15.0~70.0Hz and output voltage within the 80~140VAC at Low Range or the 160~280VAC at High Range					
	<1% (Resistive Load) at 70.1~500Hz and output voltage within the 80~140VAC at Low Range or the 160~280VAC at High Range					
	<1.5% (Resistive Load) at 501~1000Hz and output voltage within the 80~140VAC at Low Range or the 160~280VAC at High Range					
Crest Factor(CF)	≤6					
Load Regulation	± 0.5%F.S. @ 15~100HZ (Resistive Load)					
	± 0.8%F.S. @ Others Freq (Resistive Load)					
Line Regulation	± 0.1V					
Programmable Output Impedance	Not Support					
Harmonic & Interharmonics Simulation	Not Support					
<b>Measurent(Master)</b>						
Voltage	Range	AC 0~300VAC DC 0~424VDC				
	Resolution	0.1V				
	Accuracy	AC 0.2% of setting + 0.4%F.S. (Notes: Vpeak: 0.6% of setting+1%F.S.) DC 0.3% of setting + 0.4%F.S.				
Frequency	Range	15~1000HZ				
	Resolution	0.1Hz(15.0~99.9Hz), 1Hz(100~1000Hz)				
	Accuracy	0.1% of setting				
Current(r.m.s)	Range	H 0.15A~5.6A				
		M -				
		L 0.1A~3A				
		mA -				
	Resolution	0.01A				
Accuracy	0.4%+1.0%F.S					



# SPS-300 Series AC Power Supply System

MODEL		SPS300VAC1200W-2-9	SPS300VAC1800W-2-9	SPS300VAC2400W-2-17
Current(Peak)	Range	0A~32.4A		
	Resolution	0.01A		
	Accuracy	0.4%+1.5%F.S.		
Power	Range	0~600W		
	Resolution	0.1W		
	Accuracy	0.4% of setting + 1%F.S. at PF>0.2, Voltage >5V		
Power Apparent (VA)	Range	0~612VA		
	Resolution	0.1VA		
	Accuracy	Voltage * I <sub>rms</sub> , Calculated value		
Power Resistive (VAR)	Range	0~612VAR		
	Resolution	0.1VAR		
	Accuracy	$\sqrt{(VA)^2 - (W)^2}$ , Calculated value		
Power Factor (PF)	Range	0.00~1.00		
	Resolution	0.01		
	Accuracy	W/VA, Calculated value		
Harmonic	Not Support			
Σ Current	Range <sup>[1]</sup>	H 0.15A~10.08A	H 0.15A~15.12A	H 0.15A~20.16A
		M -		
		L 0.1A~5.4A	L 0.1A~8.1A	L 0.1A~10.8A
	Resolution	0.01A		
	Accuracy	0.4%+1.0%F.S.		
Σ Current	Range <sup>[1]</sup>	0~1080W	0~1620W	0~2160W
	Resolution	0.1W		
	Accuracy	0.4% of setting +0.3%F.S at PF >0.2, Voltage > 5V		
<b>Extra Function</b>				
Remote Sense	Range	5V(rms), Max. Total power less than rated power		
Slew Rate	Range	AC Voltage 0.001~1200.000V/ms and Disable		
		DC Voltage 0.001~1000.000V/ms and Disable		
		Frequency 0.001~1600.000HZ/ms and Disable		
Transient Generator(only for 15-70HZ)	Range	Trans-Start : 0.0~66.5ms@15Hz , Resolution : 0.1ms		
		Trans-Volt : -212V~+212V(L), -424V~+424V(H), Resolution : 0.1V		
		Trans-Time : 0.0~66.5ms@15Hz , Resolution : 0.1ms		
		Trans-Cycle : 0~9999, Constant		
Calibration <sup>[2]</sup>	Firmware-based calibration through the digital interface or front panel			
Graphic Display	4.3" Color touch LCD			
Operation Key Feature	Soft key, Numeric key, Rotary Knob, USB port for transfer and upgrading firmware			
Rack mount Handles	Yes			
FAN	Temperature Control			
Protection Circuits	OCP, OVP, OPP, OTP, RCP, PRI_UVP, PRI_OVP, PRI_OTP, PRI_OCP, USB_OCP			
Interface	Standard USB, RS-485, RS-232, GPIB & LAN is Optional			
<b>Environment</b>				
Operating Temperature	0°C~40°C			
Storage Temperature	-40°C~85°C			
Fan Noise	55dB Min; 76dB Max.	56.8dB Min; 77.8dB Max.	58dB Min; 79dB Max.	
Altitude	2000m			
Relative Humidity	5%~95%, non-condensing			
Temperature Coefficient	100ppm/°C at Voltage, 300ppm/°C at Current, 100ppm/°C at Frequency			
<b>Mechanical</b>				
Dimensions(WxHxD)	540.0x400.0x640.0 mm	540.0x400.0x640.0 mm	560.0x754.0x700.0 mm	
Package Dimensions(W x H x D)	660.0x710.0x760.0 mm	660.0x710.0x760.0 mm	680.0x1120.0x860.0 mm	
Unit Weight	72.8kg	88.7kg	133.6kg	
Shipping Weight	89.7kg	108.7kg	172.0kg	
<b>Regulatory Compliance</b>				
CE Mark	Installation Overvoltage Category II; Class II equipment; indoor use only.			

[1] In parallel mode, the amount needed to be reduced to 90 %

[2] Calibration function only available for single unit.

All specifications are subject to change without notice.

# SPS-300 Series AC Power Supply System

MODEL	SPS300VAC2000W-2-9		SPS300VAC3000W-2-9		SPS300VAC4000W-2-17	
<b>Input</b>						
Voltage	90~265VAC					
Frequency	47~63Hz					
Phase	3 Phase, 4Wire+Groud/Y Connect					
Max.Current	30A		45A		60A	
Power Factor at 220VAC Input, Full	≥0.95, Active PFC					
Efficiency	>86% (Peak)					
	>84% at 220VAC, 50Hz input/230VAC, 50Hz output)					
<b>Output</b>						
AC Power(Total) <sup>(1)</sup>	1800VA		2700VA		3600VA	
Max.Current (r.m.s) <sup>(1)</sup>	0~150V(L)	16.56A		24.84A		33.12A
	0~300V(H)	8.28A		12.42A		16.56A
Max.Current (Peak) <sup>(1)</sup>	0~150V(L)	99.36A		149.04A		198.72A
	0~300V(H)	49.68A		74.52A		99.36A
Voltage(AC)	Range	0~300VAC, 150V/300V/Auto				
	Resolution	0.1V				
	Accuracy	0.2% of setting + 0.8%F.S., at Voltage >3V				
Phase Angle (Starting /Ending)	Range	0~359.9°				
	Resolution	0.1°				
	Accuracy	±1° @45~65HZ				
Current OC Fold Mode	Range	0.1A				
	Resolution	2.0% of setting + 2.0%F.S.				
	Response Time	<1400ms				
Frequency	Range	15~1000HZ Full Range Adjust				
	Resolution	0.1Hz at 15.0~99.9Hz, 1Hz at 100~1000Hz				
	Accuracy	0.03% of setting				
Voltage(DC)	Range	0~424Vdc, 212V/424V/Auto				
	Resolution	0.1V				
	Accuracy	0.3% of setting + 0.8%F.S., at Voltage >3V				
Max.Current(L/H Range)(Total)	0~150V(L)	L 11.7A		L 17.55A		L 23.4A
	0~300V(H)	H 5.94A		H 8.91A		H 11.88A
Ripple & Noise(r.m.s)	L <1000mVrms @ Bandwidth 20HZ to 1MHZ					
	H <1500mVrms @ Bandwidth 20HZ to 1MHZ					
Ripple & Noise(Peak)	<4000mVp-p @ Bandwidth 20HZ to 1MHZ					
<b>Other Parameters</b>						
Total Harmonic Distortion(THD)	<0.5% (Resistive Load) at 15.0~70.0Hz and output voltage within the 80~140VAC at Low Range or the 160~280VAC at High Range					
	<1% (Resistive Load) at 70.1~500Hz and output voltage within the 80~140VAC at Low Range or the 160~280VAC at High Range					
	<1.5% (Resistive Load) at 501~1000Hz and output voltage within the 80~140VAC at Low Range or the 160~280VAC at High Range					
Crest Factor(CF)	≤6					
Load Regulation	± 0.5%F.S. @ 15~100HZ (Resistive Load)					
	± 0.8%F.S. @ Others Freq (Resistive Load)					
Line Regulation	± 0.1V					
Programmable Output Impedance	Not Support					
Harmonic & Interharmonics Simulation	Not Support					
<b>Measurent(Master)</b>						
Voltage	Range	AC 0~300VAC DC 0~424VDC				
	Resolution	0.1V				
	Accuracy	AC 0.2% of setting + 0.4%F.S. (Notes: Vpeak: 0.6% of setting+1%F.S.) DC 0.3% of setting + 0.4%F.S.				
Frequency	Range	15~1000HZ				
	Resolution	0.1Hz(15.0~99.9Hz), 1Hz(100~1000Hz)				
	Accuracy	0.1% of setting				
Current(r.m.s)	Range	H 0.15A~9.2A				
		M -				
		L 0.1A~3A				
		mA -				
	Resolution	0.01A				
Accuracy	0.4%+1.0%F.S					

# SPS-300 Series AC Power Supply System

MODEL		SPS300VAC2000W-2-9	SPS300VAC3000W-2-9	SPS300VAC4000W-2-17	
Current(Peak)	Range	0A~55.2A			
	Resolution	0.01A			
	Accuracy	0.4%+1.5%F.S.			
Power	Range	0~1000W			
	Resolution	0.1W			
	Accuracy	0.4% of setting +1%F.S. at PF>0.2, Voltage >5V			
Power Apparent (VA)	Range	0~1020VA			
	Resolution	0.1VA			
	Accuracy	Voltage * I <sub>rms</sub> , Calculated value			
Power Resistive (VAR)	Range	0~1020VAR			
	Resolution	0.1VAR			
	Accuracy	$\sqrt{(VA)^2 - (W)^2}$ , Calculated value			
Power Factor (PF)	Range	0.00~1.00			
	Resolution	0.01			
	Accuracy	W/VA, Calculated value			
Harmonic		Not Support			
Σ Current	Range <sup>[1]</sup>	H	0.15A~16.56A	H 0.15A~24.84A	H 0.15A~33.12A
		M			
		L	0.1A~5.4A	L 0.1A~8.1A	L 0.1A~10.8A
	Resolution	0.01A			
	Accuracy	0.4%+1.0%F.S.			
Σ Current	Range <sup>[1]</sup>	0~1800W	0~2700W	0~3600W	
	Resolution	0.1W			
	Accuracy	0.4% of setting +0.3%F.S at PF >0.2, Voltage > 5V			
<b>Extra Function</b>					
Remote Sense	Range	5V(rms), Max. Total power less than rated power			
Slew Rate	Range	AC Voltage 0.001~1200.000V/ms and Disable			
		DC Voltage 0.001~1000.000V/ms and Disable			
		Frequency 0.001~1600.000HZ/ms and Disable			
Transient Generator(only for 15-70HZ)	Range	Trans-Start : 0.0~66.5ms@15Hz , Resolution : 0.1ms			
		Trans-Volt : -212V~+212V(L), -424V~+424V(H), Resolution : 0.1V			
		Trans-Time : 0.0~66.5ms@15Hz , Resolution : 0.1ms			
		Trans-Cycle : 0~9999, Constant			
Calibration <sup>[2]</sup>		Firmware-based calibration through the digital interface or front panel			
Graphic Display		4.3" Color touch LCD			
Operation Key Feature		Soft key, Numeric key, Rotary Knob, USB port for transfer and upgrading firmware			
Rack mount Handles		Yes			
FAN		Temperature Control			
Protection Circuits		OCP, OVP, OPP, OTP, RCP, PRI_UVP, PRI_OVP, PRI_OTP, PRI_OCP, USB_OCP			
Interface		Standard USB, RS-485, RS-232, GPIB & LAN is Optional			
<b>Environment</b>					
Operating Temperature		0°C~40°C			
Storage Temperature		-40°C~85°C			
Fan Noise		55dB Min; 76dB Max.	56.8dB Min; 77.8dB Max.	58dB Min; 79dB Max.	
Altitude		2000m			
Relative Humidity		5%~95%, non-condensing			
Temperature Coefficient		100ppm/°C at Voltage, 300ppm/°C at Current, 100ppm/°C at Frequency			
<b>Mechanical</b>					
Dimensions(WxHxD)		540.0x400.0x640.0 mm	540.0x400.0x640.0 mm	560.0x754.0x700.0 mm	
Package Dimensions(W xHxD)		660.0x710.0x760.0 mm	680.0x710.0x760.0 mm	680.0x1120.0x860.0 mm	
Unit Weight		72.8kg	88.7kg	133.6kg	
Shipping Weight		89.7kg	108.7kg	172.0kg	
<b>Regulatory Compliance</b>					
CE Mark		Installation Overvoltage Category II; Class II equipment; indoor use only.			

[1] In parallel mode, the amount needed to be reduced to 90 %

[2] Calibration function only available for single unit.

All specifications are subject to change without notice.

# SPS-300 Series AC Power Supply System

MODEL	SPS300VAC3000W-2-9		SPS300VAC4500W-2-9		SPS300VAC6000W-2-17	
<b>Input</b>						
Voltage	100~265VAC					
Frequency	47~63Hz					
Phase	3 Phase, 4Wire+Groud/Y Connect					
Max.Current	38A		57A		76A	
Power Factor at 220VAC Input, Full	≥0.97, Active PFC					
Efficiency	>87% (Peak)					
	>86% at 220VAC, 50Hz input/230VAC, 50Hz output)					
<b>Output</b>						
AC Power(Total) <sup>1)</sup>	2700VA		4050VA		5400VA	
Max.Current (r.m.s) <sup>1)</sup>	0~150V(L)	24.84A		37.26A		49.68A
	0~300V(H)	12.42A		18.63A		24.84A
Max.Current (Peak) <sup>1)</sup>	0~150V(L)	149.04A		223.56A		298.08A
	0~300V(H)	74.52A		111.78A		149.04A
Voltage(AC)	Range	0~300VAC, 150V/300V/Auto				
	Resolution	0.1V				
	Accuracy	0.2% of setting + 0.8%F.S, at Voltage >3V				
Phase Angle (Starting /Ending)	Range	0~359.9°				
	Resolution	0.1°				
	Accuracy	±1° @45~65HZ				
Current OC Fold Mode	Range	0.1A				
	Resolution	2.0% of setting + 2.0%F.S.				
	Response Time	<1400ms				
Frequency	Range	15~1000HZ Full Range Adjust				
	Resolution	0.1Hz at 15.0~99.9Hz, 1Hz at 100~1000Hz				
	Accuracy	0.03% of setting				
Voltage(DC)	Range	0~424Vdc, 212V/424V/Auto				
	Resolution	0.1V				
	Accuracy	0.3% of setting + 0.8%F.S, at Voltage >3V				
Max.Current(L/H Range)(Total)	0~150V(L)	L 17.568A		L 26.352A		L 35.136A
	0~300V(H)	H 8.784A		H 13.176A		H 17.568A
Ripple & Noise(r.m.s)	L <1000mVrms @ Bandwidth 20HZ to 1MHZ					
	H <1500mVrms @ Bandwidth 20HZ to 1MHZ					
Ripple & Noise(Peak)	<4000mVp-p @ Bandwidth 20HZ to 1MHZ					
<b>Other Parameters</b>						
Total Harmonic Distortion(THD)	<0.5% (Resistive Load) at 15.0~70.0Hz and output voltage within the 80~140VAC at Low Range or the 160~280VAC at High Range					
	<1% (Resistive Load) at 70.1~500Hz and output voltage within the 80~140VAC at Low Range or the 160~280VAC at High Range					
	<1.5% (Resistive Load) at 501~1000Hz and output voltage within the 80~140VAC at Low Range or the 160~280VAC at High Range					
Crest Factor(CF)	≤6					
Load Regulation	± 0.5%F.S. @ 15~100HZ (Resistive Load)					
	± 0.8%F.S. @ Others Freq (Resistive Load)					
Line Regulation	± 0.1V					
Programmable Output Impedance	Not Support					
Harmonic & Interharmonics Simulation	Not Support					
<b>Measurent(Master)</b>						
Voltage	Range	AC 0~300VAC DC 0~424VDC				
	Resolution	0.1V				
	Accuracy	AC 0.2% of setting + 0.4%F.S. (Notes: Vpeak: 0.6% of setting+1%F.S.) DC 0.3% of setting + 0.4%F.S.				
Frequency	Range	15~1000HZ				
	Resolution	0.1Hz(15.0~99.9Hz), 1Hz(100~1000Hz)				
	Accuracy	0.1% of setting				
Current(r.m.s)	Range	H 0.15A~ 13.8A				
		M -				
		L 0.1A ~ 3A				
		mA -				
	Resolution	0.01A				
Accuracy	0.4%+1.0%F.S					

# SPS-300 Series AC Power Supply System

MODEL		SPS300VAC3000W-2-9	SPS300VAC4500W-2-9	SPS300VAC6000W-2-17
Current(Peak)	Range	0A~82.8A		
	Resolution	0.01A		
	Accuracy	0.4%+1.5%F.S.		
Power	Range	0~1500W		
	Resolution	0.1W		
	Accuracy	0.4% of setting +1%F.S. at PF>0.2, Voltage >5V		
Power Apparent (VA)	Range	0~1530VA		
	Resolution	0.1VA		
	Accuracy	Voltage * Irms, Calculated value		
Power Resistive (VAR)	Range	0~1530VAR		
	Resolution	0.1VAR		
	Accuracy	$\sqrt{(VA)^2 - (W)^2}$ , Calculated value		
Power Factor (PF)	Range	0.00~1.00		
	Resolution	0.01		
	Accuracy	W/VA, Calculated value		
Harmonic		Not Support		
Σ Current	Range <sup>[1]</sup>	H 0.15A~24.84A	H 0.15A~37.26A	H 0.15A~49.68A
		M -		
		L 0.1A~5.4A	L 0.1A~8.1A	L 0.1A~10.8A
	Resolution	0.01A		
	Accuracy	0.4%+1.0%F.S.		
Σ Current	Range <sup>[1]</sup>	0~2700W	0~4050W	0~5400W
	Resolution	0.1W		
	Accuracy	0.4% of setting +0.3%F.S at PF >0.2, Voltage > 5V		
<b>Extra Function</b>				
Remote Sense	Range	5V(rms), Max. Total power less than rated power		
Slew Rate	Range	AC Voltage 0.001~1200.000V/ms and Disable		
		DC Voltage 0.001~1000.000V/ms and Disable		
		Frequency 0.001~1600.000Hz/ms and Disable		
Transient Generator(only for 15-70HZ)	Range	Trans-Start : 0.0~66.5ms@15Hz , Resolution : 0.1ms		
		Trans-Volt : -212V~+212V(L), -424V~+424V(H), Resolution : 0.1V		
		Trans-Time : 0.0~66.5ms@15Hz , Resolution : 0.1ms		
		Trans-Cycle : 0~9999, Constant		
Calibration <sup>[2]</sup>		Firmware-based calibration through the digital interface or front panel		
Graphic Display		4.3" Color touch LCD		
Operation Key Feature		Soft key, Numeric key, Rotary Knob, USB port for transfer and upgrading firmware		
Rack mount Handles		Yes		
FAN		Temperature Control		
Protection Circuits		OCP, OVP, OPP, OTP, RCP, PRI_UVP, PRI_OVP, PRI_OTP, PRI_OCP, USB_OCP		
Interface		Standard USB, RS-485, RS-232, GPIB & LAN is Optional		
<b>Environment</b>				
Operating Temperature		0°C~40°C		
Storage Temperature		-40°C~85°C		
Fan Noise		55dB Min; 76dB Max.	56.8dB Min; 77.8dB Max.	58dB Min; 79dB Max.
Altitude		2000m		
Relative Humidity		5%~95%, non-condensing		
Temperature Coefficient		100ppm/°C at Voltage, 300ppm/°C at Current, 100ppm/°C at Frequency		
<b>Mechanical</b>				
Dimensions(WxHxD)		540.0x400.0x640.0 mm	540.0x400.0x640.0 mm	560.0x754.0x700.0 mm
Package Dimensions(W x H x D)		660.0x710.0x760.0 mm	660.0x710.0x760.0 mm	680.0x1120.0x860.0 mm
Unit Weight		72.8kg	88.7kg	133.6kg
Shipping Weight		89.7kg	108.7kg	172.0kg
<b>Regulatory Compliance</b>				
CE Mark		Installation Overvoltage Category II; Class II equipment; indoor use only.		

[1] In parallel mode, the amount needed to be reduced to 90 %

[2] Calibration function only available for single unit.

All specifications are subject to change without notice.



# SPS-300 Series AC Power Supply System

MODEL	SPS300VAC4000W-3-17		SPS300VAC6000W-3-17		SPS300VAC8000W-3-17	
<b>Input</b>						
Voltage	190~265VAC					
Frequency	47~63Hz					
Phase	3 Phase, 4Wire+Groud/Y Connect					
Max.Current	28A		42A		56A	
Power Factor at 220VAC Input, Full	≥0.99, Active PFC					
Efficiency	>87% (Peak)					
	>86% at 220VAC, 50Hz input/230VAC, 50Hz output)					
<b>Output</b>						
AC Power(Total) <sup>(1)</sup>	3600VA		5400VA		7200VA	
Max.Current (r.m.s) <sup>(1)</sup>	0~150V(L)	28.8A		43.2A		57.6A
	0~300V(H)	14.4A		21.6A		28.8A
Max.Current (Peak) <sup>(1)</sup>	0~150V(L)	144A		216A		288A
	0~300V(H)	72A		108A		144A
Voltage(AC)	Range	0~300VAC, 150V/300V/Auto				
	Resolution	0.1V				
	Accuracy	0.2% of setting + 0.8%F.S., at Voltage >3V				
Phase Angle (Starting /Ending)	Range	0~359.9°				
	Resolution	0.1°				
	Accuracy	±1° @45~65HZ				
Current OC Fold Mode	Range	0.1A				
	Resolution	2.0% of setting + 2.0%F.S.				
	Response Time	<1400ms				
Frequency	Range	15~1000HZ Full Range Adjust				
	Resolution	0.1Hz at 15.0~99.9Hz, 1Hz at 100~1000Hz				
	Accuracy	0.03% of setting				
Voltage(DC)	Range	0~424Vdc, 212V/424V/Auto				
	Resolution	0.1V				
	Accuracy	0.3% of setting + 0.8%F.S., at Voltage >3V				
Max.Current(L/H Range)(Total)	0~150V(L)	L 20.34A		L 30.51A		L 40.68A
	0~300V(H)	H 10.17A		H 15.255A		H 20.34A
Ripple & Noise(r.m.s)	L <1000mVrms @ Bandwidth 20HZ to 1MHZ					
	H <1500mVrms @ Bandwidth 20HZ to 1MHZ					
Ripple & Noise(Peak)	<4000mVp-p @ Bandwidth 20HZ to 1MHZ					
<b>Other Parameters</b>						
Total Harmonic Distortion(THD)	<0.5% (Resistive Load) at 15.0~70.0Hz and output voltage within the 80~140VAC at Low Range or the 160~280VAC at High Range					
	<1% (Resistive Load) at 70.1~500Hz and output voltage within the 80~140VAC at Low Range or the 160~280VAC at High Range					
	<1.5% (Resistive Load) at 501~1000Hz and output voltage within the 80~140VAC at Low Range or the 160~280VAC at High Range					
Crest Factor(CF)	≤5					
Load Regulation	± 0.5%F.S. @ 15~100HZ (Resistive Load)					
	± 0.8%F.S. @ Others Freq (Resistive Load)					
Line Regulation	± 0.1V					
Programmable Output Impedance	Not Support					
Harmonic & Interharmonics Simulation	Not Support					
<b>Measurent(Master)</b>						
Voltage	Range	AC 0~300VAC DC 0~424VDC				
	Resolution	0.1V				
	Accuracy	AC 0.2% of setting + 0.4%F.S. (Notes: Vpeak: 0.6% of setting+1%F.S.) DC 0.3% of setting + 0.4%F.S.				
Frequency	Range	15~1000HZ				
	Resolution	0.1Hz(15.0~99.9Hz), 1Hz(100~1000Hz)				
	Accuracy	0.1% of setting				
Current(r.m.s)	Range	H 0.15A~20A				
		M -				
		L 0.1A~5A				
		mA 0.02~1.5A				
	Resolution	0.01A				
Accuracy	0.4%+1.0%F.S					

# SPS-300 Series AC Power Supply System

MODEL		SPS300VAC4000W-3-17	SPS300VAC6000W-3-17	SPS300VAC8000W-3-17
Current(Peak)	Range	0A~81.5A		
	Resolution	0.01A		
	Accuracy	0.4%+1.5%F.S.		
Power	Range	0~2040W		
	Resolution	0.1W		
	Accuracy	0.4% of setting +1%F.S. at PF>0.2, Voltage >5V		
Power Apparent (VA)	Range	0~2040VA		
	Resolution	0.1VA		
	Accuracy	Voltage * I <sub>rms</sub> , Calculated value		
Power Resistive (VAR)	Range	0~2040VAR		
	Resolution	0.1VAR		
	Accuracy	$\sqrt{(VA)^2-(W)^2}$ , Calculated value		
Power Factor (PF)	Range	0.00~1.00		
	Resolution	0.01		
	Accuracy	W/VA, Calculated value		
Harmonic	Not Support			
Σ Current	Range <sup>[1]</sup>	H 0.15A~28.8A	H 0.15A~43.2A	H 0.15A~57.6A
		M -		
		L 0.1A~9A	L 0.1A~13.5A	L 0.1A~18A
		mA 0.02~2.7A	mA 0.02~4.05A	mA 0.02~5.4A
	Resolution	0.01A		
Accuracy	0.4%+1.0%F.S.			
Σ Current	Range <sup>[1]</sup>	0~3762W	0~5508W	0~7344W
	Resolution	0.1W		
	Accuracy	0.4% of setting +0.3%F.S at PF >0.2, Voltage > 5V		
<b>Extra Function</b>				
Remote Sense	Range	5V(rms), Max. Total power less than rated power		
Slew Rate	Range	AC Voltage 0.001~1200.000V/ms and Disable		
		DC Voltage 0.001~1000.000V/ms and Disable		
		Frequency 0.001~1600.000HZ/ms and Disable		
Transient Generator(only for 15-70HZ)	Range	Trans-Start : 0.0~66.5ms@15Hz , Resolution : 0.1ms		
		Trans-Volt : -212V~+212V(L), -424V~+424V(H), Resolution : 0.1V		
		Trans-Time : 0.0~66.5ms@15Hz , Resolution : 0.1ms		
		Trans-Cycle : 0~9999, Constant		
Calibration <sup>[2]</sup>	Firmware-based calibration through the digital interface or front panel			
Graphic Display	4.3" Color touch LCD			
Operation Key Feature	Soft key, Numeric key, Rotary Knob, USB port for transfer and upgrading firmware			
Rack mount Handles	Yes			
FAN	Temperature Control			
Protection Circuits	OCP, OVP, OPP, OTP, RCP, PRI_UVP, PRI_OVP, PRI_OTP, PRI_OCP, USB_OCP			
Interface	Standard USB, RS-485, RS-232, GPIB & LAN is Optional			
<b>Environment</b>				
Operating Temperature	0°C~40°C			
Storage Temperature	-40°C~85°C			
Fan Noise	55dB Min; 76dB Max.	56.8dB Min; 77.8dB Max.	58dB Min; 79dB Max.	
Altitude	2000m			
Relative Humidity	5%~95%, non-condensing			
Temperature Coefficient	100ppm/°C at Voltage, 300ppm/°C at Current, 100ppm/°C at Frequency			
<b>Mechanical</b>				
Dimensions(WxHxD)	560.0x754.0x700.0 mm	560.0x754.0x700.0 mm	560.0x754.0x700.0 mm	
Package Dimensions(W xHxD)	680.0x1146.0x820.0 mm	680.0x1146.0x820.0 mm	680.0x1120.0x860.0 mm	
Unit Weight	112.6kg	134.0kg	155.6kg	
Shipping Weight	148.6kg	173.0kg	194.0kg	
<b>Regulatory Compliance</b>				
CE Mark	Installation Overvoltage Category II; Class II equipment; indoor use only.			

[1]In parallel mode, the amount needed to be reduced to 90 %

[2]Calibration function only available for single unit.

All specifications are subject to change without notice.

# SPS-300 Series AC Power Supply System

MODEL	SPS300VAC6000W-4-17		SPS300VAC9000W-4-17		SPS300VAC12000W-4-21	
<b>Input</b>						
Voltage	190~265VAC					
Frequency	47~63Hz					
Phase	3 Phase, 4Wire+Groud/Y Connect					
Max.Current	40A		60A		80A	
Power Factor at 220VAC Input, Full	≥0.98, Active PFC					
Efficiency	>86% (Peak)					
	>85% at 220VAC, 50Hz input/230VAC, 50Hz output)					
<b>Output</b>						
AC Power(Total) <sup>(1)</sup>	5400VA		8100VA		10800VA	
Max.Current (r.m.s) <sup>(1)</sup>	0~150V(L)	49.68A		74.52A		99.36A
	0~300V(H)	24.84A		37.26A		49.68A
Max.Current (Peak) <sup>(1)</sup>	0~150V(L)	298.08A		447.12A		596.16A
	0~300V(H)	149.04A		223.56A		298.08A
Voltage(AC)	Range	0~300VAC, 150V/300V/Auto				
	Resolution	0.1V				
	Accuracy	0.2% of setting + 0.8%F.S, at Voltage >3V				
Phase Angle (Starting /Ending)	Range	0~359.9°				
	Resolution	0.1°				
	Accuracy	±1° @45~65HZ				
Current OC Fold Mode	Range	0.1A				
	Resolution	2.0% of setting + 2.0%F.S.				
	Response Time	<1400ms				
Frequency	Range	15~1000HZ Full Range Adjust				
	Resolution	0.1Hz at 15.0~99.9Hz, 1Hz at 100~1000Hz				
	Accuracy	0.03% of setting				
Voltage(DC)	Range	0~424Vdc, 212V/424V/Auto				
	Resolution	0.1V				
	Accuracy	0.3% of setting + 0.8%F.S, at Voltage >3V				
Max.Current(L/H Range)(Total)	0~150V(L)	L 35.28A		L 52.92A		L 70.56A
	0~300V(H)	H 17.64A		H 26.46A		H 35.28A
Ripple & Noise(r.m.s)	L <1000mVrms @ Bandwidth 20HZ to 1MHZ					
	H <1500mVrms @ Bandwidth 20HZ to 1MHZ					
Ripple & Noise(Peak)	<4000mVp-p @ Bandwidth 20HZ to 1MHZ					
<b>Other Parameters</b>						
Total Harmonic Distortion(THD)	<0.5% (Resistive Load) at 15.0~70.0Hz and output voltage within the 80~140VAC at Low Range or the 160~280VAC at High Range					
	<1% (Resistive Load) at 70.1~500Hz and output voltage within the 80~140VAC at Low Range or the 160~280VAC at High Range					
	<1.5% (Resistive Load) at 501~1000Hz and output voltage within the 80~140VAC at Low Range or the 160~280VAC at High Range					
Crest Factor(CF)	≤6					
Load Regulation	± 0.5%F.S. @ 15~100HZ (Resistive Load)					
	± 0.8%F.S. @ Others Freq (Resistive Load)					
Line Regulation	± 0.1V					
Programmable Output Impedance	Not Support					
Harmonic & Interharmonics Simulation	Not Support					
<b>Measurent(Master)</b>						
Voltage	Range	AC 0~300VAC DC 0~424VDC				
	Resolution	0.1V				
	Accuracy	AC 0.2% of setting + 0.4%F.S. (Notes: Vpeak: 0.6% of setting+1%F.S.) DC 0.3% of setting + 0.4%F.S.				
Frequency	Range	15~1000HZ				
	Resolution	0.1Hz(15.0~99.9Hz), 1Hz(100~1000Hz)				
	Accuracy	0.1% of setting				
Current(r.m.s)	Range	H 0.3A~27.6A				
		M 0.2A~20A				
		L 0.1A~5A				
		mA 0.02~1.5A				
	Resolution	0.01A				
Accuracy	0.4%+1.0%F.S					

# SPS-300 Series AC Power Supply System

MODEL		SPS300VAC6000W-4-17	SPS300VAC9000W-4-17	SPS300VAC12000W-4-21
Current(Peak)	Range	0A~168.6A		
	Resolution	0.01A		
	Accuracy	0.4%+1.5%F.S.		
Power	Range	0~3060W		
	Resolution	0.1W		
	Accuracy	0.4% of setting +1%F.S. at PF>0.2, Voltage >5V		
Power Apparent (VA)	Range	0~3060VA		
	Resolution	0.1VA		
	Accuracy	Voltage * I <sub>rms</sub> , Calculated value		
Power Resistive (VAR)	Range	0~3060VAR		
	Resolution	0.1VAR		
	Accuracy	$\sqrt{(VA)^2 - (W)^2}$ , Calculated value		
Power Factor (PF)	Range	0.00~1.00		
	Resolution	0.01		
	Accuracy	W/VA, Calculated value		
Harmonic		Not Support		
Σ Current	Range <sup>[1]</sup>	H 0.3A~49.68A	H 0.3A~74.52A	H 0.3A~99.36A
		M 0.2A~36A	M 0.2A~54A	M 0.2A~72A
		L 0.1A~9A	L 0.1A~13.5A	L 0.1A~18A
		mA 0.02~2.7A	mA 0.02~4.05A	mA 0.02~5.4A
	Resolution	0.01A		
Accuracy	0.4%+1.0%F.S.			
Σ Current	Range <sup>[1]</sup>	0~5508W	0~8262W	0~11016W
	Resolution	0.1W		
	Accuracy	0.4% of setting +0.3%F.S at PF >0.2, Voltage > 5V		
<b>Extra Function</b>				
Remote Sense	Range	5V(rms), Max. Total power less than rated power		
Slew Rate	Range	AC Voltage 0.001~1200.000V/ms and Disable		
		DC Voltage 0.001~1000.000V/ms and Disable		
		Frequency 0.001~1600.000HZ/ms and Disable		
Transient Generator(only for 15-70HZ)	Range	Trans-Start : 0.0~66.5ms@15Hz , Resolution : 0.1ms		
		Trans-Volt : -212V~+212V(L), -424V~+424V(H), Resolution : 0.1V		
		Trans-Time : 0.0~66.5ms@15Hz , Resolution : 0.1ms		
		Trans-Cycle : 0~9999, Constant		
Calibration <sup>[2]</sup>	Firmware-based calibration through the digital interface or front panel			
Graphic Display	4.3" Color touch LCD			
Operation Key Feature	Soft key, Numeric key, Rotary Knob, USB port for transfer and upgrading firmware			
Rack mount Handles	Yes			
FAN	Temperature Control			
Protection Circuits	OCP, OVP, OPP, OTP, RCP, PRI_UVP, PRI_OVP, PRI_OTP, PRI_OCP, USB_OCP			
Interface	Standard USB, RS-485, RS-232, GPIB & LAN is Optional			
<b>Environment</b>				
Operating Temperature	0°C~40°C			
Storage Temperature	-40°C~85°C			
Fan Noise	55dB Min; 76dB Max.	56.8dB Min; 77.8dB Max.	58dB Min; 79dB Max.	
Altitude	2000m			
Relative Humidity	5%~95%, non-condensing			
Temperature Coefficient	100ppm/°C at Voltage, 300ppm/°C at Current, 100ppm/°C at Frequency			
<b>Mechanical</b>				
Dimensions(WxHxD)	560.0x754.0x700.0 mm	560.0x754.0x700.0 mm	560.0x932.0x700.0 mm	
Package Dimensions(W x H x D)	680.0x1146.0x820.0 mm	680.0x1146.0x820.0 mm	680.0x1297.0x820.0 mm	
Unit Weight	128.0kg	157.0kg	224kg	
Shipping Weight	163.0kg	195.0kg	265kg	
<b>Regulatory Compliance</b>				
CE Mark	Installation Overvoltage Category II; Class II equipment; indoor use only.			

[1]In parallel mode, the amount needed to be reduced to 90 %

[2]Calibration function only available for single unit.

All specifications are subject to change without notice.

# SPS-300 Series AC Power Supply System

MODEL	SPS300VAC8000W-4-17		SPS300VAC12000W-4-17		SPS300VAC16000W-4-21	
<b>Input</b>						
Voltage	190~265VAC					
Frequency	47~63Hz					
Phase	3 Phase, 4Wire+Groud/Y Connect					
Max.Current	50A		70A		100A	
Power Factor at 220VAC Input, Full	≥0.99, Active PFC					
Efficiency	>87% (Peak)					
	>86% at 220VAC, 50Hz input/230VAC, 50Hz output)					
<b>Output</b>						
AC Power(Total) <sup>(1)</sup>	7200VA		10800VA		14400VA	
Max.Current (r.m.s) <sup>(1)</sup>	0~150V(L)	57.6A	86.4A		115.2A	
	0~300V(H)	28.8A	43.2A		57.6A	
Max.Current (Peak) <sup>(1)</sup>	0~150V(L)	288A	432A		576A	
	0~300V(H)	144A	216A		288A	
Voltage(AC)	Range	0~300VAC, 150V/300V/Auto				
	Resolution	0.1V				
	Accuracy	0.2% of setting + 0.8%F.S., at Voltage >3V				
Phase Angle (Starting /Ending)	Range	0~359.9°				
	Resolution	0.1°				
	Accuracy	±1° @45~65HZ				
Current OC Fold Mode	Range	0.1A				
	Resolution	2.0% of setting + 2.0%F.S.				
	Response Time	<1400ms				
Frequency	Range	15~1000HZ Full Range Adjust				
	Resolution	0.1Hz at 15.0~99.9Hz, 1Hz at 100~1000Hz				
	Accuracy	0.03% of setting				
Voltage(DC)	Range	0~424Vdc, 212V/424V/Auto				
	Resolution	0.1V				
	Accuracy	0.3% of setting + 0.8%F.S., at Voltage >3V				
Max.Current(L/H Range)(Total)	0~150V(L)	L 40.68A	L 61.02A		L 81.36A	
	0~300V(H)	H 20.34A	H 30.51A		H 40.68A	
Ripple & Noise(r.m.s)	L <1000mVrms @ Bandwidth 20HZ to 1MHZ					
	H <1500mVrms @ Bandwidth 20HZ to 1MHZ					
Ripple & Noise(Peak)	<4000mVp-p @ Bandwidth 20HZ to 1MHZ					
<b>Other Parameters</b>						
Total Harmonic Distortion(THD)	<0.5% (Resistive Load) at 15.0~70.0Hz and output voltage within the 80~140VAC at Low Range or the 160~280VAC at High Range					
	<1% (Resistive Load) at 70.1~500Hz and output voltage within the 80~140VAC at Low Range or the 160~280VAC at High Range					
	<1.5% (Resistive Load) at 501~1000Hz and output voltage within the 80~140VAC at Low Range or the 160~280VAC at High Range					
Crest Factor(CF)	≤5					
Load Regulation	± 0.5%F.S. @ 15~100HZ (Resistive Load)					
	± 0.8%F.S. @ Others Freq (Resistive Load)					
Line Regulation	± 0.1V					
Programmable Output Impedance	Not Support					
Harmonic & Interharmonics Simulation	Not Support					
<b>Measurent(Master)</b>						
Voltage	Range	AC 0~300VAC DC 0~424VDC				
	Resolution	0.1V				
	Accuracy	AC 0.2% of setting + 0.4%F.S. (Notes: Vpeak: 0.6% of setting+1%F.S.) DC 0.3% of setting + 0.4%F.S.				
Frequency	Range	15~1000HZ				
	Resolution	0.1Hz(15.0~99.9Hz), 1Hz(100~1000Hz)				
	Accuracy	0.1% of setting				
Current(r.m.s)	Range	H 0.3A~32A				
		M 0.2A~20A				
		L 0.1A~5A				
		mA 0.02~1.5A				
	Resolution	0.01A				
Accuracy	0.4%+1.0%F.S					



# SPS-300 Series AC Power Supply System

MODEL		SPS300VAC8000W-4-17	SPS300VAC12000W-4-17	SPS300VAC16000W-4-21
Current(Peak)	Range	0.05A~163A		
	Resolution	0.01A		
	Accuracy	0.4%+1.5%F.S.		
Power	Range	0~4080W		
	Resolution	0.1W		
	Accuracy	0.4% of setting +1%F.S. at PF>0.2, Voltage >5V		
Power Apparent (VA)	Range	0~4080VA		
	Resolution	0.1VA		
	Accuracy	Voltage * I <sub>rms</sub> , Calculated value		
Power Resistive (VAR)	Range	0~4080VAR		
	Resolution	0.1VAR		
	Accuracy	$\sqrt{(VA)^2-(W)^2}$ , Calculated value		
Power Factor (PF)	Range	0.00~1.00		
	Resolution	0.01		
	Accuracy	W/VA, Calculated value		
Harmonic		Not Support		
Σ Current	Range <sup>[1]</sup>	H 0.3A~57.6A	H 0.3A~86.4A	H 0.3A~115.2A
		M 0.2A~36A	M 0.2A~54A	M 0.2A~72A
		L 0.1A~9A	L 0.1A~13.5A	L 0.1A~18A
		mA 0.02~2.7A	mA 0.02~4.05A	mA 0.02~5.4A
	Resolution	0.01A		
Accuracy	0.4%+1.0%F.S.			
Σ Current	Range <sup>[1]</sup>	0~7344W	0~11016W	0~14688W
	Resolution	0.1W		
	Accuracy	0.4% of setting +0.3%F.S at PF >0.2, Voltage > 5V		
<b>Extra Function</b>				
Remote Sense	Range	5V(rms), Max. Total power less than rated power		
Slew Rate	Range	AC Voltage 0.001~1200.000V/ms and Disable		
		DC Voltage 0.001~1000.000V/ms and Disable		
		Frequency 0.001~1600.000HZ/ms and Disable		
Transient Generator(only for 15-70HZ)	Range	Trans-Start : 0.0~66.5ms@15Hz , Resolution : 0.1ms		
		Trans-Volt : -212V~+212V(L), -424V~+424V(H), Resolution : 0.1V		
		Trans-Time : 0.0~66.5ms@15Hz , Resolution : 0.1ms		
		Trans-Cycle : 0~9999, Constant		
Calibration <sup>[2]</sup>	Firmware-based calibration through the digital interface or front panel			
Graphic Display	4.3" Color touch LCD			
Operation Key Feature	Soft key, Numeric key, Rotary Knob, USB port for transfer and upgrading firmware			
Rack mount Handles	Yes			
FAN	Temperature Control			
Protection Circuits	OCP, OVP, OPP, OTP, RCP, PRI_UVP, PRI_OVP, PRI_OTP, PRI_OCP, USB_OCP			
Interface	Standard USB, RS-485, RS-232, GPIB & LAN is Optional			
<b>Environment</b>				
Operating Temperature	0°C~40°C			
Storage Temperature	-40°C~85°C			
Fan Noise	55dB Min; 76dB Max.	56.8dB Min; 77.8dB Max.	58dB Min; 79dB Max.	
Altitude	2000m			
Relative Humidity	5%~95%, non-condensing			
Temperature Coefficient	100ppm/°C at Voltage, 300ppm/°C at Current, 100ppm/°C at Frequency			
<b>Mechanical</b>				
Dimensions(WxHxD)	560.0x754.0x700.0 mm	560.0x754.0x700.0 mm	560.0x932.0x700.0 mm	
Package Dimensions(W xHxD)	680.0x1146.0x820.0 mm	680.0x1146.0x820.0 mm	680.0x1297.0x820.0 mm	
Unit Weight	128.0kg	157.0kg	224kg	
Shipping Weight	163.0kg	195.0kg	265.0kg	
<b>Regulatory Compliance</b>				
CE Mark	Installation Overvoltage Category II; Class II equipment; indoor use only.			

[1]In parallel mode, the amount needed to be reduced to 90 %

[2]Calibration function only available for single unit.

All specifications are subject to change without notice.

# SPS-300 Series AC Power Supply System

MODEL	SPS300VAC10000W-4-17		SPS300VAC15000W-4-17		SPS300VAC20000W-4-21	
<b>Input</b>						
Voltage	190~265VAC					
Frequency	47~63Hz					
Phase	3 Phase, 4Wire+Groud/Y Connect					
Max.Current	60A		90A		120A	
Power Factor at 220VAC Input, Full	≥0.99, Active PFC					
Efficiency	>87% (Peak)					
	>86% at 220VAC, 50Hz input/230VAC, 50Hz output)					
<b>Output</b>						
AC Power(Total) <sup>(1)</sup>	9000VA		13500VA		18000VA	
Max.Current (r.m.s) <sup>(1)</sup>	0~150V(L)	82.8A		124.2A		165.6A
	0~300V(H)	41.4A		62.1A		82.8A
Max.Current (Peak) <sup>(1)</sup>	0~150V(L)	331.2A		496.8A		662.4A
	0~300V(H)	165.6A		248.4A		331.2A
Voltage(AC)	Range	0~300VAC, 150V/300V/Auto				
	Resolution	0.1V				
	Accuracy	0.2% of setting + 0.8%F.S, at Voltage >3V				
Phase Angle (Starting /Ending)	Range	0~359.9°				
	Resolution	0.1°				
	Accuracy	±1° @45~65HZ				
Current OC Fold Mode	Range	0.1A				
	Resolution	2.0% of setting + 2.0%F.S.				
	Response Time	<1400ms				
Frequency	Range	15~1000HZ Full Range Adjust				
	Resolution	0.1Hz at 15.0~99.9Hz, 1Hz at 100~1000Hz				
	Accuracy	0.03% of setting				
Voltage(DC)	Range	0~424Vdc, 212V/424V/Auto				
	Resolution	0.1V				
	Accuracy	0.3% of setting + 0.8%F.S, at Voltage >3V				
Max.Current(L/H Range)(Total)	0~150V(L)	L 58.68A		L 88.02A		L 117.36A
	0~300V(H)	H 29.34A		H 44.01A		H 58.68A
Ripple & Noise(r.m.s)	L <1000mVrms @ Bandwidth 20HZ to 1MHZ					
	H <1500mVrms @ Bandwidth 20HZ to 1MHZ					
Ripple & Noise(Peak)	<4000mVp-p @ Bandwidth 20HZ to 1MHZ					
<b>Other Parameters</b>						
Total Harmonic Distortion(THD)	<0.5% (Resistive Load) at 15.0~70.0Hz and output voltage within the 80~140VAC at Low Range or the 160~280VAC at High Range					
	<1% (Resistive Load) at 70.1~500Hz and output voltage within the 80~140VAC at Low Range or the 160~280VAC at High Range					
	<1.5% (Resistive Load) at 501~1000Hz and output voltage within the 80~140VAC at Low Range or the 160~280VAC at High Range					
Crest Factor(CF)	≤4					
Load Regulation	± 0.5%F.S. @15~100HZ (Resistive Load)					
	± 0.8%F.S. @ Others Freq (Resistive Load)					
Line Regulation	± 0.1V					
Programmable Output Impedance	Not Support					
Harmonic & Interharmonics Simulation	Not Support					
<b>Measurent(Master)</b>						
Voltage	Range	AC 0~300VAC DC 0~424VDC				
	Resolution	0.1V				
	Accuracy	AC 0.2% of setting + 0.4%F.S. (Notes: Vpeak: 0.6% of setting+1%F.S.) DC 0.3% of setting + 0.4%F.S.				
Frequency	Range	15~1000HZ				
	Resolution	0.1Hz(15.0~99.9Hz), 1Hz(100~1000Hz)				
	Accuracy	0.1% of setting				
Current(r.m.s)	Range	H 0.3A~46A				
		M 0.2A~20A				
		L 0.1A~5A				
		mA 0.02~1.5A				
	Resolution	0.01A				
Accuracy	0.4%+1.0%F.S					

# SPS-300 Series AC Power Supply System

MODEL		SPS300VAC10000W-4-17	SPS300VAC15000W-4-17	SPS300VAC20000W-4-21
Current(Peak)	Range	0.05A~188A		
	Resolution	0.01A		
	Accuracy	0.4%+1.5%F.S.		
Power	Range	0~5100W		
	Resolution	0.1W		
	Accuracy	0.4% of setting +1%F.S. at PF>0.2, Voltage >5V		
Power Apparent (VA)	Range	0~5100VA		
	Resolution	0.1VA		
	Accuracy	Voltage * I <sub>rms</sub> , Calculated value		
Power Resistive (VAR)	Range	0~5100VAR		
	Resolution	0.1VAR		
	Accuracy	$\sqrt{(VA)^2 - (W)^2}$ , Calculated value		
Power Factor (PF)	Range	0.00~1.00		
	Resolution	0.01		
	Accuracy	W/VA, Calculated value		
Harmonic		Not Support		
Σ Current	Range <sup>[1]</sup>	H 0.3A~82.8A	H 0.3A~124.2A	H 0.3A~165.6A
		M 0.2A~36A	M 0.2A~54A	M 0.2A~72A
		L 0.1A~9A	L 0.1A~13.5A	L 0.1A~18A
		mA 0.02~2.7A	mA 0.02~4.05A	mA 0.02~5.4A
	Resolution	0.01A		
Accuracy	0.4%+1.0%F.S.			
Σ Current	Range <sup>[1]</sup>	0~9180W	0~13770W	0~18360W
	Resolution	0.1W		
	Accuracy	0.4% of setting +0.3%F.S at PF >0.2, Voltage > 5V		
<b>Extra Function</b>				
Remote Sense	Range	5V(rms), Max. Total power less than rated power		
Slew Rate	Range	AC Voltage 0.001~1200.000V/ms and Disable		
		DC Voltage 0.001~1000.000V/ms and Disable		
		Frequency 0.001~1600.000HZ/ms and Disable		
Transient Generator(only for 15-70HZ)	Range	Trans-Start : 0.0~66.5ms@15Hz , Resolution : 0.1ms		
		Trans-Volt : -212V~+212V(L), -424V~+424V(H), Resolution : 0.1V		
		Trans-Time : 0.0~66.5ms@15Hz , Resolution : 0.1ms		
		Trans-Cycle : 0~9999, Constant		
Calibration <sup>[2]</sup>		Firmware-based calibration through the digital interface or front panel		
Graphic Display		4.3" Color touch LCD		
Operation Key Feature		Soft key, Numeric key, Rotary Knob, USB port for transfer and upgrading firmware		
Rack mount Handles		Yes		
FAN		Temperature Control		
Protection Circuits		OCP, OVP, OPP, OTP, RCP, PRI_UVP, PRI_OVP, PRI_OTP, PRI_OCP, USB_OCP		
Interface		Standard USB, RS-485, RS-232, GPIB & LAN is Optional		
<b>Environment</b>				
Operating Temperature		0°C~40°C		
Storage Temperature		-40°C~85°C		
Fan Noise		55dB Min; 76dB Max.	56.8dB Min; 77.8dB Max.	58dB Min; 79dB Max.
Altitude		2000m		
Relative Humidity		5%~95%, non-condensing		
Temperature Coefficient		100ppm/°C at Voltage, 300ppm/°C at Current, 100ppm/°C at Frequency		
<b>Mechanical</b>				
Dimensions(WxHxD)		560.0x754.0x700.0 mm	560.0x754.0x700.0 mm	560.0x932.0x700.0 mm
Package Dimensions(W xHxD)		680.0x1146.0x820.0 mm	680.0x1146.0x820.0 mm	680.0x1297.0x820.0 mm
Unit Weight		128.0kg	157.0kg	224.0kg
Shipping Weight		163.0kg	195.0kg	265kg
<b>Regulatory Compliance</b>				
CE Mark		Installation Overvoltage Category II; Class II equipment; indoor use only.		

[1]In parallel mode, the amount needed to be reduced to 90 %

[2]Calibration function only available for single unit.

All specifications are subject to change without notice.

# SPS-300 Series AC Power Supply System

MODEL	SPS600VAC1200W-2-9		SPS600VAC2000W-2-9		SPS600VAC3000W-2-9	
<b>Series Mode</b>						
Series Quantity	2					
<b>Input</b>						
Voltage	90~265VAC		90~265VAC		100~265VAC	
Frequency	47-63Hz					
Phase	3 Phase, 4Wire+Groud/Y Connect					
Max.Current	20A		30A		38A	
Power Factor at 220VAC Input, Full	>0.91, Active PFC		>0.95, Active PFC		>0.97, Active PFC	
Efficiency	>82% (Peak)		>86% (Peak)		>87% (Peak)	
	>80%(220VAC/50HZ input/230VAC,50HZ output)		>84%(220VAC/50HZ input/230VAC,50HZ output)		>86%(220VAC/50HZ input/230VAC,50HZ output)	
<b>Output</b>						
Max.Output Power	AC	1080VA		1800VA		2700VA
	DC	1080W		1800W		2700W
Max.Current (r.m.s)	0~150V(L)	5.04A		8.28A		12.42A
	0~300V(H)	2.52A		4.14A		6.21A
Max.Current (Peak)	0~150V(L)	29.16A		49.68A		74.52A
	0~300V(H)	14.58A		24.84A		37.26A
Voltage(AC)	Range	0-600VAC				
	Resolution	0.1V				
	Accuracy	1% of setting+0.2%F.S				
Output Voltage(DC)	Range	0-848VDC				
	Resolution	0.1V				
	Accuracy	1% of setting+0.2%F.S				
Ripple & Noise(r.m.s)	L(5-414V) <1100mVrms @Bandwidth 20HZ to 1MHZ H(5-648V) <2000mVrms @Bandwidth 20HZ to 1MHZ					
Ripple & Noise(Peak)	<6000mVp-p @Bandwidth 20HZ to 1MHZ					
<b>Other Parameters</b>						
Total Harmonic Distortion(THD)	<0.5% (Resistive Load) at 15.0~70.0Hz and output voltage within the 80~140VAC at Low Range or the 160~280VAC at High Range <1% (Resistive Load) at 70.1~500Hz and output voltage within the 80~140VAC at Low Range or the 160~280VAC at High Range <1.5% (Resistive Load) at 501~1000Hz and output voltage within the 100~140VAC at Low Range or the 160~280VAC at High Range <2% (Resistive Load) at 1001~1200Hz and output voltage within the 100~140VAC at Low Range or the 160~280VAC at High Range Note: 1001-1200Hz only available for the Professional version of power.					
Crest Factor(CF)	≤5		≤6		≤4	
Load Regulation	± 0.5%F.S. @ 15 ~100HZ (Resistive Load)					
	± 0.8%F.S. @ Others Freq (Resistive Load)					
Line Regulation	± 0.1V					
Programmable Output Impedance	Not Support					
Harmonic & Interharmonics Simulation	Not Support					
<b>Series Measurent</b>						
Voltage	Range	AC 0~600VAC DC 0~848VDC				
	Resolution	0.1V				
	Accuracy	1% of setting+0.2%F.S, at Voltage >3V				
Frequency	Range	Advanced : 0-1000Hz Professional : 0-1200Hz				
	Resolution	0.1Hz (15.0 - 99.9Hz), 1Hz (100 - 1000Hz), 5Hz (1001 - 1200Hz)				
	Accuracy	0.03% of setting±0.2HZ				
Current(r.m.s)	Range	0.05A-5.60A		0.05A-9.20A		0.05A-13.80A
	Resolution	0.01A (0-99.99A), 0.1A (>99.99A)				
	Accuracy	1%+0.6%F.S				
Current(Peak)	Range	0.10A-32.40A		0.10A-55.2A		0.10A-82.80A
	Resolution	0.01A (0-99.99A), 0.1A (>99.99A)				
	Accuracy	1.5%+1.0%F.S (CF<1.5)				

# SPS-300 Series AC Power Supply System

MODEL		SPS600VAC1200W-2-9	SPS600VAC2000W-2-9	SPS600VAC3000W-2-9
Power	Range	0-1224W	0-2040W	0-3060W
	Resolution	1W		
	Accuracy	1.5% of setting +0.6%FS (PF>0.2, Voltage >5V)		
Power Apparent (VA)	Range	0-1224VA	0-2040VA	0-3060VA
	Resolution	1VA		
	Accuracy	Voltage * I <sub>rms</sub> , Calculated value		
Power Resistive (VAR)	Range	0-1224VAR	0-2040VAR	0-3060VAR
	Resolution	1VAR		
	Accuracy	$\sqrt{(VA)^2 - (W)^2}$ , Calculated value		
Power Factor	Range	0.01-1.00		
	Resolution	0.01		
	Accuracy	W/VA, Calculated value		
<b>Extra Function</b>				
Remote Sense	Range	5V(rms), Max. Total power less than rated power		
Slew Rate	Range	AC Voltage 0.001~1200.000V/ms and Disable		
		DC Voltage 0.001~1000.000V/ms and Disable		
		Frequency 0.001~1600.000HZ/ms and Disable		
Transient Generator(only for 15-70HZ)	Range	Trans-Start : 0.0~66.5ms@15Hz, Resolution : 0.1ms		
		Trans-Volt : -212V~+212V(L), -424V~+424V(H),Resolution : 0.1V		
		Trans-Time : 0.0~66.5ms@15Hz, Resolution : 0.1ms		
		Trans-Cycle : 0~9999, Constant		
Calibration <sup>[1]</sup>	Firmware-based calibration through the digital interface or front panel			
Graphic Display	4.3" Color touch LCD			
Operation Key Feature	Soft key, Numeric key, Rotary Knob, USB port for transfer and upgrading firmware			
Rack mount Handles	Yes			
FAN	Temperature Control			
Protection Circuits	OCP, OVP, OPP, OTP, RCP, PRI_UVP, PRI_OVP, PRI_OTP, PRI_OCP, USB_OCP			
Interface	Standard USB, RS-485, RS-232, GPIB & LAN is Optional			
<b>Environment</b>				
Operating Temperature	0°C~40°C			
Storage Temperature	-40°C~85°C			
Fan Noise	55dB Min; 76dB Max.			
Altitude	2000m			
Relative Humidity	5%~95%, non-condensing			
Temperature Coefficient	100ppm/°C at Voltage, 300ppm/°C at Current, 100ppm/°C at Frequency			
<b>Mechanical</b>				
Dimensions(WxHxD)	540.0x400.0x640.0 mm			
Package Dimensions(W x H x D)	660.0x575.0x800.0 mm			
Unit Weight	72.8kg			
Shipping Weight	89.7kg			
<b>Regulatory Compliance</b>				
CE Mark	Installation Overvoltage Category II; Class II equipment; indoor use only.			

[1] Calibration function only available for single unit.

All specifications are subject to change without notice.



# SPS-300 Series AC Power Supply System

MODEL		SPS600VAC4000W-3-17	
<b>Series Mode</b>			
Series Quantity	2		
<b>Input</b>			
Voltage	190~265VAC		
Frequency	47-63Hz		
Phase	3 Phase, 4Wire+Groud/Y Connect		
Max.Current	28A		
Power Factor at 220VAC Input, Full	>0.99, Active PFC		
Efficiency	>87% (Peak)		
	>86%(220VAC/50HZ input/230VAC,50HZ output)		
<b>Output</b>			
Max.Output Power	AC	3600VA	
	DC	3600W	
Max.Current (r.m.s)	0~150V(L)	14.40A	
	0~300V(H)	7.20A	
Max.Current (Peak)	0~150V(L)	72.00A	
	0~300V(H)	36.00A	
Voltage(AC)	Range	0-600VAC	
	Resolution	0.1 V	
	Accuracy	1% of setting+0.2%F.S	
Output Voltage(DC)	Range	0-848VDC	
	Resolution	0.1V	
	Accuracy	1% of setting+0.2%F.S	
Ripple & Noise(r.m.s)	L(5-414V) <1100mVrms @Bandwidth 20HZ to 1MHZ H(5-648V) <2000mVrms @Bandwidth 20HZ to 1MHZ		
Ripple & Noise(Peak)	<6000mVp-p @Bandwidth 20HZ to 1MHZ		
<b>Other Parameters</b>			
Total Harmonic Distortion(THD)	<0.5% (Resistive Load) at 15.0~70.0Hz and output voltage within the 80~140VAC at Low Range or the 160~280VAC at High Range <1% (Resistive Load) at 70.1~500Hz and output voltage within the 80~140VAC at Low Range or the 160~280VAC at High Range <1.5% (Resistive Load) at 501~1000Hz and output voltage within the 100~140VAC at Low Range or the 160~280VAC at High Range <2% (Resistive Load) at 1001~1200Hz and output voltage within the 100~140VAC at Low Range or the 160~280VAC at High Range Note: 1001-1200Hz only available for the Professional version of power.		
Crest Factor(CF)	≤ 5		
Load Regulation	± 0.5%F.S. @ 15 ~100HZ (Resistive Load)		
	± 0.8%F.S. @ Others Freq (Resistive Load)		
Line Regulation	± 0.1V		
Programmable Output Impedance	Not Support		
Harmonic & Interharmonics Simulation	Not Support		
<b>Series Measurent</b>			
Voltage	Range	AC 0~600VAC DC 0~848VDC	
	Resolution	0.1V	
	Accuracy	1% of setting+ 0.2%F.S, at Voltage >3V	
Frequency	Range	Advanced : 0-1000Hz Professional : 0-1200Hz	
	Resolution	0.1Hz (15.0 - 99.9Hz), 1Hz (100 - 1000Hz), 5Hz ( 1001 - 1200Hz)	
	Accuracy	0.03% of setting±0.2HZ	
Current(r.m.s)	Range	0.05A-16.00A	
	Resolution	0.01A (0-99.99A), 0.1A ( >99.99A)	
	Accuracy	1%+0.6%F.S	
Current(Peak)	Range	0.10A-81.50A	
	Resolution	0.01A (0-99.99A), 0.1A ( >99.99A)	
	Accuracy	1.5%+1.0%F.S (CF<1.5)	

# SPS-300 Series AC Power Supply System

MODEL		SPS600VAC4000W-3-17
Power	Range	0-4080W
	Resolution	1W
	Accuracy	1.5% of setting +0.6%FS (PF>0.2, Voltage >5V)
Power Apparent (VA)	Range	0-4080VA
	Resolution	1VA
	Accuracy	Voltage * I <sub>rms</sub> , Calculated value
Power Resistive (VAR)	Range	0-4080VAR
	Resolution	1VAR
	Accuracy	$\sqrt{(VA)^2 - (W)^2}$ , Calculated value
Power Factor	Range	0.01-1.00
	Resolution	0.01
	Accuracy	W/VA, Calculated value
<b>Extra Function</b>		
Remote Sense	Range	5V(rms), Max. Total power less than rated power
Slew Rate	Range	AC Voltage 0.001~1200.000V/ms and Disable
		DC Voltage 0.001~1000.000V/ms and Disable
		Frequency 0.001~1600.000HZ/ms and Disable
Transient Generator(only for 15-70HZ)	Range	Trans-Start : 0.0~66.5ms@15Hz, Resolution : 0.1ms
		Trans-Volt : -212V~+212V(L), -424V~+424V(H),Resolution : 0.1V
		Trans-Time : 0.0~66.5ms@15Hz, Resolution : 0.1ms
		Trans-Cycle : 0~9999, Constant
Calibration <sup>[1]</sup>	Firmware-based calibration through the digital interface or front panel	
Graphic Display	5.6" Color touch LCD	
Operation Key Feature	Soft key, Numeric key, Rotary Knob, USB port for transfer and upgrading firmware	
Rack mount Handles	Yes	
FAN	Temperature Control	
Protection Circuits	OCP, OVP, OPP, OTP, RCP, PRI_UVP, PRI_OVP, PRI_OTP, PRI_OCP, USB_OCP	
Interface	Standard USB, RS-485, RS-232, GPIB & LAN is Optional	
<b>Environment</b>		
Operating Temperature	0°C~40°C	
Storage Temperature	-40°C~85°C	
Fan Noise	55dB Min; 76dB Max.	
Altitude	2000m	
Relative Humidity	5%~95%, non-condensing	
Temperature Coefficient	100ppm/°C at Voltage, 300ppm/°C at Current, 100ppm/°C at Frequency	
<b>Mechanical</b>		
Dimensions(WxHxD)	560.0x945.0x700.0 mm	
Package Dimensions(W x H x D)	680.0x1120.0x860.0 mm	
Unit Weight	112.6kg	
Shipping Weight	148.6kg	
<b>Regulatory Compliance</b>		
CE Mark	Installation Overvoltage Category II; Class II equipment; indoor use only.	

[1]Calibration function only available for single unit.

All specifications are subject to change without notice.

# SPS-300 Series AC Power Supply System

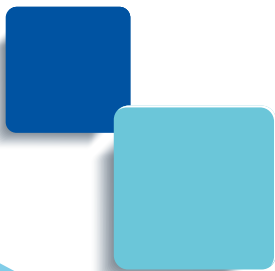
MODEL		SPS600VAC6000W-4-17	SPS600VAC8000W-4-17	SPS600VAC10000W-4-17
<b>Series Mode</b>				
Series Quantity	2			
<b>Input</b>				
Voltage	190~265VAC			
Frequency	47-63Hz			
Phase	3 Phase, 4Wire+Groud/Y Connect			
Max.Current	40A		50A	60A
Power Factor at 220VAC Input, Full	>0.98, Active PFC		>0.99, Active PFC	>0.99, Active PFC
Efficiency	>86% (Peak)		>87% (Peak)	>87% (Peak)
	>85%(220VAC/50HZ input/230VAC,50HZ output)		>86%(220VAC/50HZ input/230VAC,50HZ output)	>86%(220VAC/50HZ input/230VAC,50HZ output)
<b>Output</b>				
Max.Output Power	AC	5400VA	7200VA	9000VA
	DC	5400W	7200W	9000W
Max.Current (r.m.s)	0~150V(L)	24.84A	28.80A	41.40A
	0~300V(H)	12.42A	14.40A	20.70A
Max.Current (Peak)	0~150V(L)	149.04A	144.00A	165.60A
	0~300V(H)	74.52A	72.00A	82.80A
Voltage(AC)	Range	0-600VAC		
	Resolution	0.1V		
	Accuracy	1% of setting+0.2%F.S		
Output Voltage(DC)	Range	0-848VDC		
	Resolution	0.1V		
	Accuracy	1% of setting+0.2%F.S		
Ripple & Noise(r.m.s)	L(5-414V) <1100mVrms @Bandwidth 20HZ to 1MHZ H(5-648V) <2000mVrms @Bandwidth 20HZ to 1MHZ			
Ripple & Noise(Peak)	<6000mVp-p @Bandwidth 20HZ to 1MHZ			
<b>Other Parameters</b>				
Total Harmonic Distortion(THD)	<0.5% (Resistive Load) at 15.0~70.0Hz and output voltage within the 80~140VAC at Low Range or the 160~280VAC at High Range <1% (Resistive Load) at 70.1~500Hz and output voltage within the 80~140VAC at Low Range or the 160~280VAC at High Range <1.5% (Resistive Load) at 501~1000Hz and output voltage within the 100~140VAC at Low Range or the 160~280VAC at High Range <2% (Resistive Load) at 1001~1200Hz and output voltage within the 100~140VAC at Low Range or the 160~280VAC at High Range Note: 1001-1200Hz only available for the Professional version of power.			
Crest Factor(CF)	≤6		≤5	≤4
Load Regulation	± 0.5%F.S. @ 15 ~100HZ (Resistive Load) ± 0.8%F.S. @ Others Freq (Resistive Load)			
Line Regulation	± 0.1V			
Programmable Output Impedance	Not Support			
Harmonic & Interharmonics Simulation	Not Support			
<b>Series Measurent</b>				
Voltage	Range	AC 0~600VAC DC 0~848VDC		
	Resolution	0.1V		
	Accuracy	1% of setting+0.2%F.S, at Voltage >3V		
Frequency	Range	Advanced : 0-1000Hz Professional : 0-1200Hz		
	Resolution	0.1Hz (15.0 - 99.9Hz), 1Hz (100 - 1000Hz), 5Hz ( 1001 - 1200Hz)		
	Accuracy	0.03% of setting±0.2HZ		
Current(r.m.s)	Range	0.05A-27.60A	0.05A-32.00A	0.05A-46.00A
	Resolution	0.01A (0-99.99A), 0.1A ( >99.99A)		
	Accuracy	1%+0.6%F.S		
Current(Peak)	Range	0.10A-168.60A	0.10A-163.00A	0.10A-188.00A
	Resolution	0.01A (0-99.99A), 0.1A ( >99.99A)		
	Accuracy	1.5%+1.0%F.S (CF<1.5)		

# SPS-300 Series AC Power Supply System

MODEL		SPS600VAC1200W-2-9	SPS600VAC2000W-2-9	SPS600VAC3000W-2-9
Power	Range	0-6120W	0-8160W	0-10200W
	Resolution	1W		
	Accuracy	1.5% of setting +0.6%FS (PF>0.2, Voltage >5V)		
Power Apparent (VA)	Range	0-6120VA	0-8160VA	0-10200VA
	Resolution	1VA		
	Accuracy	Voltage * I <sub>rms</sub> , Calculated value		
Power Resistive (VAR)	Range	0-6120VAR	0-8160VAR	0-10200VAR
	Resolution	1VAR		
	Accuracy	$\sqrt{(VA)^2 - (W)^2}$ , Calculated value		
Power Factor	Range	0.01-1.00		
	Resolution	0.01		
	Accuracy	W/VA, Calculated value		
<b>Extra Function</b>				
Remote Sense	Range	5V(rms), Max. Total power less than rated power		
Slew Rate	Range	AC Voltage 0.001~1200.000V/ms and Disable		
		DC Voltage 0.001~1000.000V/ms and Disable		
		Frequency 0.001~1600.000HZ/ms and Disable		
Transient Generator(only for 15-70HZ)	Range	Trans-Start : 0.0~66.5ms@15Hz, Resolution : 0.1ms		
		Trans-Volt : -212V~+212V(L), -424V~+424V(H),Resolution : 0.1V		
		Trans-Time : 0.0~66.5ms@15Hz, Resolution : 0.1ms		
		Trans-Cycle : 0~9999, Constant		
Calibration <sup>[1]</sup>	Firmware-based calibration through the digital interface or front panel			
Graphic Display	5.6" Color touch LCD			
Operation Key Feature	Soft key, Numeric key, Rotary Knob, USB port for transfer and upgrading firmware			
Rack mount Handles	Yes			
FAN	Temperature Control			
Protection Circuits	OCP, OVP, OPP, OTP, RCP, PRI_UVP, PRI_OVP, PRI_OTP, PRI_OCP, USB_OCP			
Interface	Standard USB, RS-485, RS-232, GPIB & LAN is Optional			
<b>Environment</b>				
Operating Temperature	0°C~40°C			
Storage Temperature	-40°C~85°C			
Fan Noise	55dB Min; 76dB Max.			
Altitude	2000m			
Relative Humidity	5%~95%, non-condensing			
Temperature Coefficient	100ppm/°C at Voltage, 300ppm/°C at Current, 100ppm/°C at Frequency			
<b>Mechanical</b>				
Dimensions(WxHxD)	560.0x945.0x700.0 mm			
Package Dimensions(W x H x D)	680.0x1120.0x860.0 mm			
Unit Weight	128.0kg			
Shipping Weight	163.0kg			
<b>Regulatory Compliance</b>				
CE Mark	Installation Overvoltage Category II; Class II equipment; indoor use only.			

[1]Calibration function only available for single unit.

All specifications are subject to change without notice.



**APM Technologies Ltd**

---

Add: #7, Link Industry Park, Kechuang Road, Nancheng,  
Dongguan, Guangdong, China

Tel: +86 769-8698 9800 ext: 8901

E-mail: [overseas@apmtech.cn](mailto:overseas@apmtech.cn)

Web: [www.apmtechate.com](http://www.apmtechate.com)



Scan the QR code for more information